



ANNUAL REPORT

30th June 2011

CONTENTS

	Page
Board of Trustees	4
Chairman's Report	5
Thank you to Bill Holland	17
Investment Advisory Committee report	20
Distributions Committee report	21
Acorn Foundation Donors	22
Acorn Distributions	24

ACORN FOUNDATION IS GRATEFUL FOR THE SUPPORT OF THE FOLLOWING ORGANISATIONS:

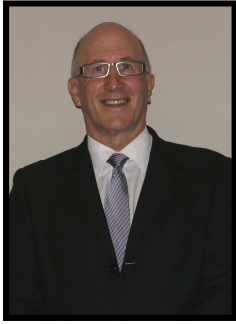


Bay of Plenty Times

THE TINDALL FOUNDATION



ACORN TRUSTEES to 30 June 2011



Bill Holland
**Chair – Retired
May 2011**



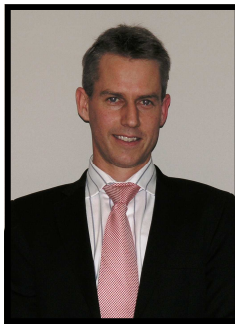
Sally Morrison
Chair – current



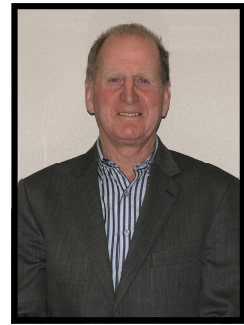
Dean Wearne



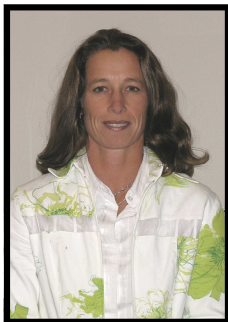
Jan Hickson



Matt Tustin



Ross Paterson



Carolyn Port



Richard Cashmore



Tracy Rea



Glenn Keaney

ACORN STAFF



Nicky Wilkins



Margot McCool



Amy Bowkett

Chairman's Report

This report covers the year ended 30 June 2011 which is our financial year.

We have a very good website (www.acornfoundation.org.nz) which is full of useful information about Acorn but there are a number of comments I want to make relating to the year just ended, and relating to the fact that this is my final Chairman's report.

1. Changing of the Guard

When the Acorn Foundation was formally established in 2003 we wanted to ensure that Acorn would always have active, energetic and committed Board members. Each trustee was to be appointed for a specified term. This term could be extended, but no trustee could remain in office for more than eight consecutive years. I fully support this policy. It ensures that every trustee can participate in determining his/her term of office and can then commit himself/herself to that term. It also allows for a planned rotation of trustees and thereby allows for a managed succession policy. Finally, it ensures that no trustee stays too long in the position and thereby frustrates the regular rejuvenation and re-energising of the Board.

I have had the enormous pleasure and satisfaction of serving as Chairman of the Board since the outset. My term totalling eight years expired on 1 May 2011 and in accordance with our succession policy, I stood down.

I was delighted when Sally Morrison agreed to take over the position of Chair. She has been a Trustee of Acorn since 2006 and has been a very valuable member of the Board. Sally was formerly a district nurse and later owned and operated a motel business. She used these nursing/business/people skills from her previous experience to start up her own private hospital. This enterprise was very successful and it grew to become a very significant business. She sold the hospital in 2007 and since doing so she has been able to devote more time to her family, her home and her many interests.

Sally is a kind and generous person with very strong business skills. Her business and leadership ability was formally recognised in 2007 when she was announced by the Tauranga Chamber of Commerce as its first ever Business Leader of the Year. Her generosity in terms of time and energy as well as financial support was recognised when Rotary International conferred upon her a Paul Harris Fellowship.

This is Rotary's highest award and was a very real honour for Sally. To add to this, in June 2011 Rotary International conferred on Sally a "Sapphire Pin" to go with the Paul Harris Fellowship. This is effectively a second Paul Harris Fellowship and is a very rare honour. Acorn is very fortunate to have Sally as its leader.

For myself, I remain fully committed to Acorn and will continue to serve and support it in a number of ways. Though not a Trustee, I will stay on the Board's Planning Committee and on the Professional Advisors' Committee. I have also been active in helping other centres establish or grow their own community foundations using Acorn as a model. So far this year I have visited Hawkes Bay, Rotorua, Auckland, Hamilton, and Timaru to support what is happening in those places.

2. Donors We Remember

Since my last report (September 2010), two of our donors have passed away and left significant legacies to be administered through Acorn.

Elva Shepherd

In 2003 Elva Shepherd established the Ray and Elva Shepherd Fund. This recognised both her and her late husband Ray.

Ray and Elva were married in 1941 and were an extremely close couple. They met when Ray was working in a management role for Thos Borthwick and Sons (where he subsequently became the District Manager) and Elva joined the firm in the office. They moved to Tauranga in 1974. Ray died in 1996 after a lengthy illness.

When establishing their Fund, Elva specified the Waipuna Hospice, Saint Columba Presbyterian Church and the local branches of the Royal NZ Foundation for the Blind, NZ Heart Foundation, the Order of St Johns, and CCS Disability Action as beneficiaries. This means that these organisations will benefit forever from this Fund.

Elva was a very pragmatic person and did not see why these very worthy organisations had to wait until she died before they could benefit. She also realised she would receive a tax rebate for any gift she made in her lifetime. She therefore began making gifts to the Fund while she was still living. She was a very modest person and did not want any publicity during her lifetime but she loved seeing her charities receive their annual income distribution from her Fund.

It was Elva who was the anonymous donor of the \$303,000 gift that was announced at our Celebration Breakfast when Prime Minister John Key joined us in celebrating our 100th Fund. I do know that Elva was thrilled about making a very real contribution to her community. I also know that she enjoyed receiving the lovely tax refund cheque from the government!

Elva passed away peacefully in January 2011. In her will she left a significant sum that has been added to the Ray and Elva Shepherd Fund.

Betty Shaw

Betty was one of our earliest donors and established the Betty Shaw Fund in 2003. Betty and her late mother had long been active supporters of the Arthritis Foundation. She saw Acorn as an ideal way to continue to support this very worthy organisation long after she was no longer able to be actively involved. Betty passed away in March 2011 and left part of her estate to the Betty Shaw Fund.

The Arthritis Foundation is the sole beneficiary of that Fund and we at Acorn will have huge pleasure in sending the income cheque to that Foundation every year forever. This is a wonderful legacy to a worthy organisation from a wonderful lady.

3. Named Endowment Funds

Acorn operates by encouraging people (donors) to establish their own Named Endowment Funds. When doing so they can specify which organisations they want to support or can simply leave it to Acorn to decide at the time.

We are aware that the Fund continues forever, but that worthy organisations come and go. Fifty years ago, there was no such organisation as Waipuna Hospice yet now it is one of Tauranga's most well known charities. It is therefore helpful to leave part of the Fund "untagged" (ie. without specifying the particular charity). In this way Acorn can therefore use its own skills and experience (through the good work of our Grants Committee) to apply the income from this part of the Fund to other needs in our community that may not have even existed at the time when the Fund was established.

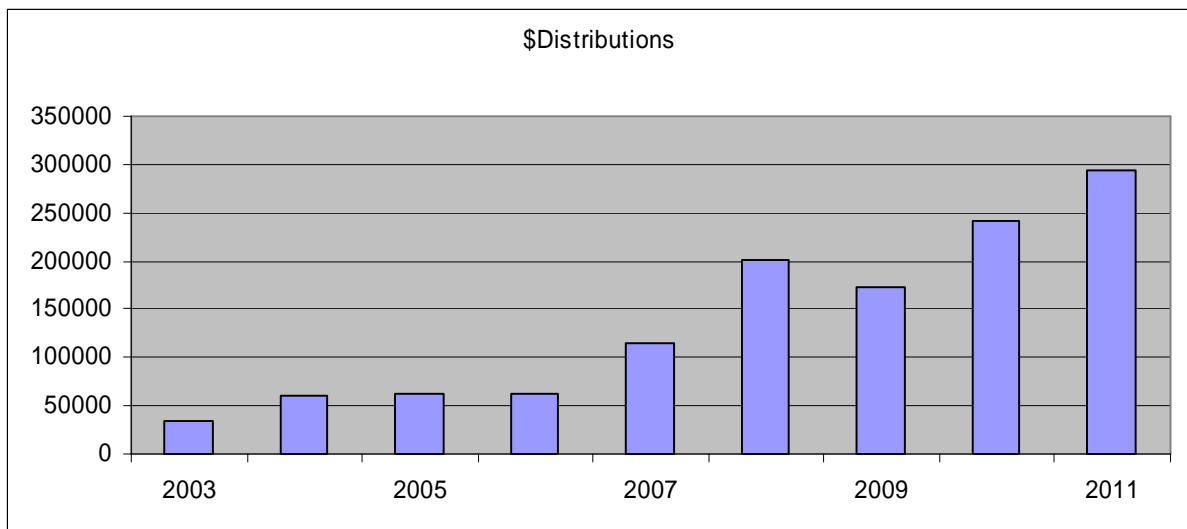
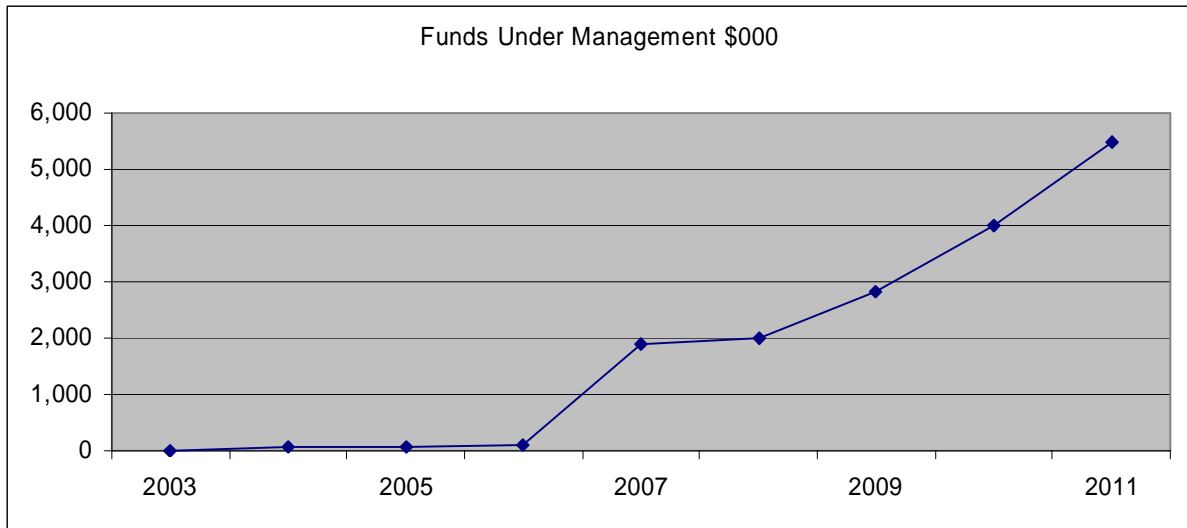
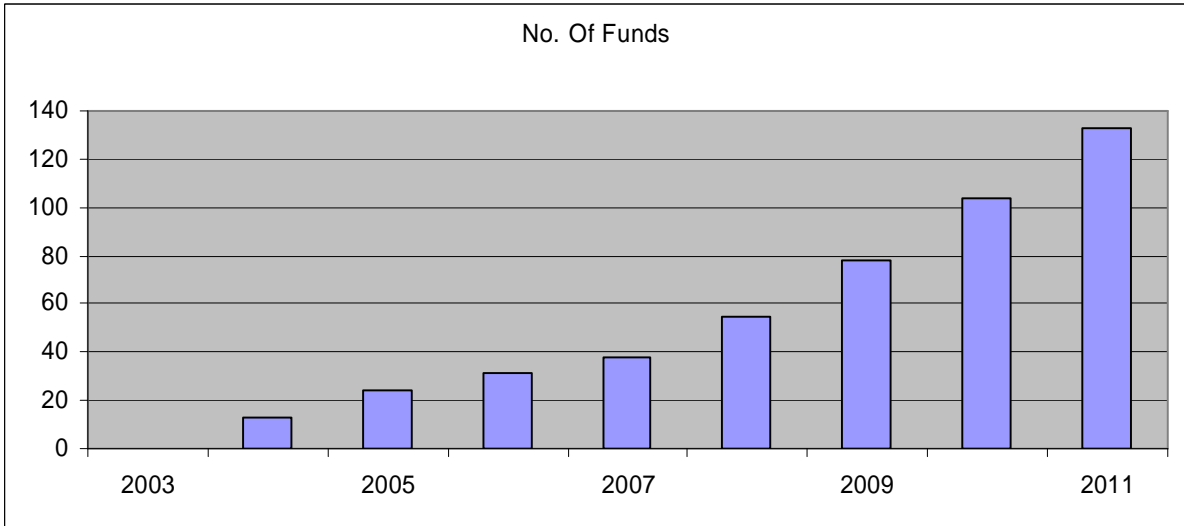
Having established the Fund, the Donor then changes his/her will to leave something to the Fund. The Donor always has the choice of following Elva Shepherd's example

of making gifts to their Fund during their lifetime. In that way the Donor enjoys seeing the benefit passing through to the community while they are living. They can also receive the tax refund.

4. Growth of Acorn

Acorn measures its growth by the number of Funds that are created. In May 2010 we celebrated the establishment of our 100th Fund because we saw that as a very significant milestone. For a new concept like Acorn to be understood and then accepted by people, it takes time. It took us three years for our first 21 Funds to be established so the achievement of 100 Funds was very significant. What is even more significant is that as at 30 June 2011 we had 131 Funds! This represents an increase of 31% in just over twelve months. This is huge growth, especially when you consider that during this time we were (and still are) all suffering from the ongoing effects of the Global Financial Crisis. We distribute 5% of the fund each year so in the coming year we will be able to distribute approximately \$294,000. This figure will grow every year as some of our donors pass on.

The benefit to the community will therefore continue to grow and the exciting thing is that there is no limit. The more donors we have, the more our community will benefit. The growth of Acorn is best illustrated by the diagrams overleaf.



5. Investments

Acorn invests the funds it holds. For these purposes we are assisted by our Investment Advisors Committee. This Committee is made up of Barrie Owen (Chair), Sir Peter Trapski, Dean Wearne, Shirley Seales and Matt Tustin. The investments themselves are made through Craigs Investments Partners. This company has assisted us since the outset and its advice has proved to be very sound. For the year ended 30 June 2011 the investment return was 8.3%. This is a very good result given the conservative nature of our investment policy and the difficult financial conditions.

At an early stage, Craigs predicted that over an extended period of time (leaving in mind that some community foundations in the US have been operating for over 100 years) we should be able to achieve a return of between 8% and 9%. Our latest result is entirely consistent with that prediction. Whatever the annual return, Acorn's policy is to distribute 5% of the total funds to the community, use 1% to pay our administration costs, and to allow the balance (if any) to be added to the capital of the fund.

6. Distributions

This year (to 30.06.2011) we continued to distribute 5% amounting to \$229,000 to the community through a wide range of organisations. Full details of these distributions are shown on our website. Some were made in accordance with the specific directions of the donors, while the gifts from the "untagged" funds were made in accordance with the recommendations of our Funds Committee.

7. Acorn Events

In April 2011 we held a very successful morning tea at the new Mount Maunganui Cosmopolitan Club facility. This was purely for our donors who really appreciated hearing the stories from some of the recipients of Acorn distributions.

8. Acorn Administration Limited

Since the outset we have kept two separate sets of accounts: one for the Acorn Foundation and one for Acorn Administration Limited. The reason for this was to

keep operational funds separated from the trust funds we hold. Our thinking was that if any legal claim were ever made against Acorn in respect of its operations, it could not extend to the trust funds. The problem with this separation was that the Company had to charge GST on the 1% of funds charge it made to the Foundation. What was effectively an "in house" transaction cost Acorn \$5426 for the year just ended, and this amount would grow every year as the amount of the funds increased.

The Board very carefully considered the accounting and legal ramifications of this. We concluded that because of the very nature of Acorn, and because of our strict adherence to proper policies and practices, there was minimal chance of any legal claim ever being successfully made against Acorn. Even if any such claim were successful it would probably be made in respect of the operation of the business and would therefore not be of a significant amount. Having reached this conclusion, we decided to discontinue using the Company, thereby saving the amount of the GST (a minimum of \$7565 to 30.06.2012.) All operational income and expenses will therefore be recorded in the Foundation's accounts. In our accounting records however, we will record the trust funds as being quite separate from the operational funds.

9. Acorn Foundation Accounts

Our financial accounts show that for the year ended 30 June 2011 the Endowment Funds we are holding grew from \$4,082,942 to \$5,677,188. This growth of \$1,594,246 came mainly from bequests and gifts. It shows that even during difficult financial times, Acorn continues to steadily grow.

10. Trusteeship

From the outset, our robust process for the appointment of trustees has ensured complete integrity, competence and balance in the makeup of the Board. When I stood down, Sally Morrison assumed the role of Chairperson, but my replacement as trustee was Glen Keaney. Glen is a partner at KPMG Chartered Accountants. He serves on the Board of Priority One and has wide experience in a range of community and business activities. He will be an excellent Board member for Acorn.

In an organisation as successful as Acorn there is the risk of becoming complacent. The Board is well aware of this and has a number of strategies to ensure it does not happen. The Board holds an annual half-day strategic planning session where all

aspects of Acorn are considered. We have a Planning Committee which meets every three months. This Committee brainstorms new ideas and initiatives and produces our draft 5-year business plan. The Board then meets every month and considers our performance as against our business plan. In addition to this there is the constant monitoring and revitalisation of the Board itself with the carefully planned turnover of Trustees. As long as this continues, I do not see any risk of complacency at Acorn.

11. Acknowledgement of Support

At Acorn we deliberately run a "lean mean" operation. The public demands that charities act responsibly in keeping down administration costs and we fully agree with this sentiment. All Acorn Trustees and Committee Members are, of course, volunteers and they freely give of their time.

There are however costs of operation. These are largely covered by the 1% annual charge on each fund, and on the \$5,000 donations we encourage when funds are established. We do however rely on the further financial support we receive from a number of individuals and companies. I would like to formally acknowledge and thank the following for their financial assistance during the past year:

(a) Tindall Foundation

It was the Tindall Foundation, established by Sir Stephen and Lady Margaret Tindall that provided the financial backing for Acorn to be established as one of a number of Community Foundations throughout New Zealand. Quite simply: if it were not for the support of the Tindall Foundation there would be no Acorn!

Acorn continues to act as the regional funding manager for all grants made by the Tindall Foundation in our region. This has helped Acorn in a number of ways. In the early years, the only money we had to give away was in the form of the Tindall Foundation grants. The procedures to be followed in relation to making grants by the Grants Committee were therefore developed during this time in relation to the Tindall grants. Since then, of course, our own funds have grown and we are now able to use that same experience when making our own grants.

The making of the Tindall Foundation grants was very helpful in the early years in giving Acorn good profile in the community. We also receive a payment from the Tindall Foundation for the service we provide and this is always most welcome! Furthermore, I have personally had regular meetings and telephone discussions over the years with Trevor Gray (the CEO of the Tindall Foundation) and his help and support has been enormous.

We are therefore extremely grateful to Trevor, his team at the Tindall Foundation, and to Sir Stephen and Lady Margaret Tindall for the interest and support they have shown us.

(b) **Craigs Investment Partners**

We continue to receive huge support from Craigs. They have been supporting us since the beginning. They continue to do so through the very good advice they give to our Investment Advisory Committee. The return of 8.3% achieved on the Fund speaks volumes for the expertise of this advice. We are therefore very grateful to Neil Craig and to his team of advisors.

(c) **Lellman Wearne Curragh Limited**

This is another company which has supported us from the very early days. Dean Wearne has been a trustee since the outset and for many years now his firm has provided us with our fully serviced office set-up at a nominal charge. Again, we are very grateful for this support.

(d) **Tauranga City Council**

Although we have no formal connection with the Council itself, Mayor Stuart Crosby and the Council staff continue to help us in a number of ways. The support of the Mayor has been very helpful in giving credibility to our organisation. In addition to this, the Council has helped with advertising and marketing opportunities.

(e) **Tuskany Agency Limited**

Part of the reason for Acorn's success has been the excellence of its marketing and advertising campaigns. This is entirely due to the work of Sally Cooke and her team at Tuskany Agency. They are very successful in achieving some remarkable advertising deals for us and they themselves are very modest in their own charges. We on the Board are very aware of this

and we want all of our supporters to be aware of how good Tuskany has been to us.

(f) **The Radio Network**

Classic Hits (95) BOP FM and the other stations in the Radio Network stable have been very supportive to us again this year. These radio stations have a very well-earned reputation for the support they give to community organisations and they have certainly been very helpful to us. We are grateful for this.

(g) **Legacy Trust (Legacy Funerals)**

It is not widely known but it is true that when Greg Brownless (who was one of Acorn's first donors to sign up) was deciding what to do about his very successful funeral business, the inspiration of giving it to charity came through Greg's association with Acorn.

He actually wanted to give the business to Acorn but as Acorn does not run businesses like this, he set up the Legacy Trust. All of the income from the Legacy Funerals' business is channelled back to the community through the Legacy Trust. The trust deed of the Legacy Trust provides that when Greg eventually passes on, control of the Legacy Trust will be effectively taken over by Acorn. Quite apart from this, the Legacy Trust makes a generous donation to Acorn's administration expenses each year. There is therefore a very close link between Acorn and Legacy. If you are a supporter of Acorn then you should also be a supporter of Legacy; and if you are ever in the position of having to recommend a funeral director, I ask that you consider Legacy.

(h) **Wood Walton**

We would also like to acknowledge Wood Walton Chartered Accountants who provide the venue for our monthly Board meetings, and who have generously printed and bound the Annual Report for us.

12. Staffing

Nicky Wilkins continues to do an extraordinary job for Acorn. Among the other Community Foundations in New Zealand she is widely recognised as the leader in her field and is frequently called upon for assistance. She is fortunate to have such strong support from Margot McCool.

Both these ladies are outstanding in the work they do. They are both employed however on a part-time basis (as they both have family commitments) and as Acorn grew we realised they needed more administrative support. It was for that reason that Amy Bowkett was employed on a part-time basis last year to give that support. Amy has been wonderful and has freed Nicky and Margot up to do their other work. Amy is now on maternity leave and while she is away, we are being helped by Estelle Steinmann. The reports coming through on her are excellent.

The quality of staff in any organisation is always extremely important, but this is perhaps more so in an organisation like Acorn which requires so much contact with people. We are extremely fortunate to have these wonderful ladies working for us.

13. Conclusion

The experience of establishing and growing the Acorn Foundation over the last eight years has, without doubt, been the most satisfying in my life in terms of community service.

Like many other people I have served my time on a range of community organisations and I derive huge pleasure from this. I cannot think of any other organisation, however, that will have the same impact on our community over a period of time that Acorn will have. We are well respected by the Tauranga community and as an organisation we will grow from strength to strength.

I want to pay tribute to the outstanding Board members who have served as trustees over the past eight years. I especially thank those who helped get Acorn started and stayed through the "difficult times" in our early years; I drew huge strength from their loyalty and support in that time.

A key to the success of Acorn has been the contribution of Mr Steve Bramley from SGL Group. Steve is a consultant based in Auckland who, among other things, helps co-ordinate and implement fundraising programmes. He was assisting the Tauranga City Council in this field when he was told about Acorn. Since then, he has played a major part in setting the structures we have today. He casts an independent and expert eye over all that we do and his assistance has been enormous.

Finally, I again need to pay tribute to our "super woman": Nicky Wilkins. We employed Nicky at a time when Acorn was struggling over a number of issues. Nicky quickly grasped the concept of Acorn and recognised the potential to do good for our community. She is a very kind, genuine and utterly good person. Her goodness is infectious. Her high energy level is legendary, and none of us quite understand where all this energy comes from. She is fortunate to have Marcus as such a supportive husband, and her wonderful children who have to put up with Acorn sharing their mother. Nicky is well recognised by us all as being key to Acorn's success, and long may this continue. To Nicky I give my personal and very sincere thanks for all that she does.

Acorn is now well-respected by the Tauranga Community and by other philanthropic organisations throughout New Zealand. It's future is assured and it will continue to grow from strength to strength.

I wish Acorn well and I want to thank all of you for the support I have received in playing my part.

A handwritten signature in blue ink, appearing to read 'Bill Holland', with a large, sweeping initial 'B'.

Bill Holland

September 2011



11 May 2011

The Trustees
Acorn Foundation
PO Box 13604
Tauranga 3141

Dear Trustees

We understand that your longstanding Chair Bill Holland is retiring from this position. On behalf of our trustees and staff, we would like to express our gratitude and admiration for what Bill has contributed and achieved during his association with Acorn and the Tindall Foundation.

From the very earliest days (which certainly had their darker moments) Bill has demonstrated amazing personal commitment to Acorn, the community foundation concept and the emerging movement in New Zealand. He has selflessly and persistently articulated a compelling case to support these new organisations, inspiring his professional peers and everyone else he can get access to with his own family's simple approach to their generosity. Bill's enthusiasm is contagious and the case he elegantly puts forward is hard to ignore. Why wouldn't you give?

From a Tindall Foundation perspective, trustees and staff have always found Bill to be extremely easy to work with and a consistently high performer. While we know he will humbly pass much of the credit for the outstanding results Acorn has achieved over to his staff and fellow trustees, Bill has always been a direct contact with our foundation and we value the close relationship he has developed. The only surprises we've had have been very pleasant surprises and we've appreciated the success Acorn has achieved so we can say (with relief!) that community foundations do work in New Zealand, you just have to follow Acorn's example. Decisions about whether to support Bill and Acorn have always been easy and paid big dividends for us. Why wouldn't we give?

Bill's personal contribution to other community foundations and the movement in New Zealand has followed the above pattern. He has travelled to many parts of the country (several times in some cases) to share his knowledge and to help fledgling groups attract the right people and focus on the right things. Bill has never charged for his time and prefers to be hosted by key local people. His leadership of, and Acorn's support for, national initiatives like the workshops and Chairs meetings have helped these bodies mature far earlier than would otherwise be the case.

In our opinion Bill Holland has been a critical ingredient for the success of Acorn, other community foundations and the movement nationally. Without his extensive and inspiring commitment and contributions over many years, the 12 foundations established over the past 10 years would still be very much in their infancy.

Thank you and congratulations Bill. We hope you'll keep working with Acorn and our foundation to achieve even more. Why wouldn't we?

Regards

Stephen Tindall
FOUNDER

Trevor Gray
MANAGER



Tauranga City



Office of the Mayor

11 May 2011

Bill Holland
Chairman
Acorn Community Foundation
PO Box 13604
Tauranga

Dear Bill

Outstanding contribution to the development and success of the Acorn Foundation

On behalf of my fellow Elected Members and the City of Tauranga, I would personally like to thank you for the outstanding service you have given to the Acorn Foundation since its inception and congratulate you on the success that has been achieved.

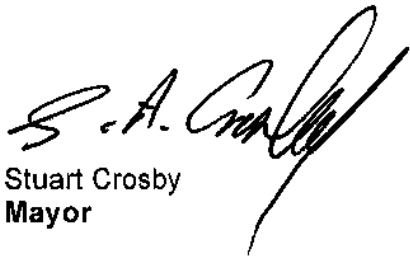
The Acorn Foundation was formed in 2003 with the full endorsement of the Tauranga City and Western Bay of Plenty District Councils, with the intent that it would become a leading community entity to foster philanthropy, in particular through bequest-based giving. Within a matter of just eight years this ambitious goal has been achieved. The Acorn Foundation is now entrenched as the sub-region's preferred charitable entity providing a safe endowment programme option for individuals and organisations in the Western Bay of Plenty. This has resulted in the foundation now having around \$5 million funds under management, 122 endowment funds set up, with around \$850,000 having been distributed to the local community.

This is an outstanding achievement and the success of the foundation has become a model for philanthropic giving which is rightly being replicated around the country. Tauranga City Council believes that the Acorn Foundation is a shining example of how communities can invest in their own future and reap the rewards of good intentions and great management.

We acknowledge that this success would not have been achieved without the sound leadership and management that you and your high calibre and dedicated trustees and staff have provided. We thank you for your stewardship of this process and we sincerely hope that you continue to be involved with the Acorn Foundation after you step down from your role as Chairman.

In summary, the Acorn Foundation has made significant progress and is well placed to play an increasingly important role in the future of the Tauranga and Western Bay of Plenty community. We thank you again for your dedication to and involvement with this achievement and wish you all the best for the future.

Kind regards

A handwritten signature in black ink, appearing to read 'S. A. Crosby', written in a cursive style.

Stuart Crosby
Mayor

sc:mk

Investment Advisory Committee Report

I have pleasure in presenting my report for the last year.

1 The Committee.

The members were-

Barrie Owen (Chair), Deane Wearne, Shirley Seales, Sir Peter Trapski, Matthew Tustin (appointed November 2010)

2 Advisors.

Craigs Investment Partners are our Advisors. They have attended all meetings and in addition we have continuous dialogue over investment decisions. Their attendance and advice are invaluable. We thank them, In particular Guy Malthus, Sarah Barlow, now retired, and Reg. Montgomery.

3 Investments.

Our investments performed as follows over the period.

	2011	2010
Opening Value at 30 th June	\$ 3,551,596	\$ 2,762,914
Net contributions over year	\$ 1,599,552	\$ 581,681
Closing Value at 30 th June	\$ 5,484,961	\$ 3,551,596

4 Returns

The gross return for the year was 9.61%. This was achieved against a benchmark of 10.5%. In considering this performance it must be remembered that as the fund grows considerable amounts are held in cash pending investment. In this low interest environment this often takes time and in the interim the funds are invested in lower return Bank deposits. The result has been satisfactory in the circumstances.

Our Investment Policy Statement has a performance objective of 8.2% pre fees. This is a long term objective.

From this return we need to cover inflation, fees and the annual distribution.

Barrie Miles Owen (Chair)

30th September 2011

Distribution Committee Report

As I am writing this report I have before me a copy of Friday 30 September 2011, Bay of Plenty Times. **"This year, \$300,000 to our community - Sixty-one local charities benefiting."** Absolutely awesome - It brings to mind...

- The Acorn Foundation nurtured over past years by previous Trustees, Committees and Management resulting in extraordinary growth in a relatively short time. - Bill Holland "keeping special watch".
- Former Distribution Committee members John Hannah and Kim Gillon – John, an excellent chairperson, dedicated to community, not afraid to challenge the committee and leaving very large shoes for anyone to step into. Also, to Kim whose knowledge of the community and insight into individual charities we visited last year was an inspiration.
- Our network of Professional and Investment Advisors who are an invaluable source of support and expertise to us all.
- The Management Team – Nicky, Margot, Amy never losing sight of "our donors" as well as presenting innovative funding and distribution ideas.
- Margot McCool's knowledge and efficiency is of enormous assistance to the Distribution Committee. She is always organised and clearly presenting options for both Tindall and Acorn distributions.

There is a wealth of knowledge within the Distribution Committee gained from the personal knowledge individual Committee members have of our community and our local charities. Their personal visits and contact with individual charities gives Acorn an intimate insight into charity needs, structure, management, strengths and weaknesses - all of which is an integral part of good grant making.

We were delighted to welcome Martin Steinmann to the Committee during the year. Martin's extensive knowledge has already proved to be a great asset as has the return of Riri Ellis to the Distribution Committee for a third term, thus retaining Riri's unique understanding of local charities and Iwi.

I should like to thank The Acorn Foundation Board, Acorn Management - Nicky, Margot and the team, our Committees' (we are always conscious of your support) and a special thanks to the Distribution Committee. It is your knowledge and commitment to our community that makes a better community for us all. It is a privilege to be part of the team and certainly a pleasure being with you all.

Committee members: Jan Hickson (Chair), Norah Reid, Christine Fraser, Riri Ellis, Martin Steinmann, Carolyn Port, Greg Brownless

Acorn Foundation's Donors

Among the donors (**131 to 30 June 2011**) who have established a fund with Acorn Foundation are:

Dave and Llyween Alexander	John Anderson
Andy & Natalie Baird	Mark Barriball
Marty Barton	Bay of Plenty Medical Students Scholarships
David and Clodagh Blackley	Edna Brown
Greg Brownless	Beverley Burns
George and Jill Butler	David and Susan Campbell
Richard Carey	Richard and Andrea Cashmore
Andrew and Patricia Chancellor	Jenny Coker
Zelda Crawshaw	Creative Tauranga
Ian and Paula Cross	Peter Cross
Murray and Sue Davies	Jane Dewar
Mary Dillon	Patricia Dooley
Emergency Services Club	Peter and Dianne Farmer
Glenn Ferrow	Des Findlay
Anne Fletcher	Sefton and Mavis Freeman
Jeffrey Friis	Get Smart Tga Drug & Alcohol Services
Rosamund Granger	Michael and Jennifer Grose
Neil and Dawn Hampton	Neville and Sonia Hardy
Robert and Gladys Harper	Jan Hickson
Noel and Barbara Hilford	Ken and Irene Holdaway
Bill and Sally Holland	Graeme and Susan Horsley
Malcolm and Joan Jackson	Jocelyn James
Lynette James	Claudia Jarman
Janice Jeffs	Daniel and Judith Jensen
Peggy Kershaw	Ray Laurie
Legacy Trust	Graeme Little
Roy Leslie and Roland Bush	David and Thea Lowe
John Lucas & Deirdre Freeman	Tony and Stephanie Marshall
Roy and Mary McGowan	Christine McSporran
Jann Medicott	Ann Moring
Sally Morrison	Mount Maunganui Lifeguard Service
MySTART – Craigs Investment Partners	Ada Neilson
Norfolk Community Health Fund	Graham O'Neill
Marlies O'Reilly	Betty Owen
Ann Owen	Pat Page
Vern and Barbara Pain	David and Dianne Parsons
Karen Pensabene	Rob and Carolyn Port
Mary Rei Preston-Thomas	Len and Ann Pritchard
Stephen and Tracy Rea	Murray and Gay Read-Smith
Arthur and Norah Reid	Patricia Roadley
Beth Robinson	Roy Leslie & Roland Bush
Jeanne Round	Tracey Rudduck-Gudsell
Robin Scoular	Richard Seton
Betty Shaw	Freda Shaw
Elva Shepherd	Phil & Norma Simpson
Glenn and Cherie Snelgrove	Neil Sole & Shirley Vincent
Jim and Barbara Steele	Merv and Lyn Stockley
Bob Sutherland	Mary Sutherland
Ashley and Pamela Sutton	Tauranga Help Foundation

Tauranga Volunteer Coastguard	E G Thornton
Tindall Foundation	Colin Toop
Eddie & Wendy Treacey	Eva Trowbridge
Sam & Nulma Turner	Susan Turner
Christine Tustain	Brian and Heather Waldegrave
Barry and Karen Waldon	Heather Walker
Kevin & Jean Walters	Dean and Nicola Wearne
Kevin and Lorraine Wearne	Alec and Susan Whatmough
Marcus and Nicky Wilkins	Kerry and Penny Williams
Russell Williams	Helen Wootton
YMCA Tauranga	Anonymous Donors (12)

October 2011 Acorn Distributions

Auckland District Kidney Society	\$ 3,836.27
Autism NZ Ltd (BOP)	\$ 4,288.00
BOP Sexual Assault Support Services Trust	\$ 6,000.00
Breast Cancer Support Services	\$ 4,000.00
Camp Quality	\$ 2,466.45
CanTeen	\$ 3,616.61
CCS Disabilty Action	\$ 3,212.44
Cool Bananas	\$ 5,000.00
Cystic Fibrosis Assn of NZ, BOP Branch	\$ 5,000.00
Dale Carnegie scholarships	\$ 12,000.00
Detour Theatre Trust	\$ 5,000.00
Elms Foundation	\$ 5,500.00
Family Education Network	\$ 5,000.00
Future Problem Solvers	\$ 2,000.00
Get Smart Tauranga	\$ 5,000.00
Kawerau Blue Light	\$ 6,000.00
Lifelink Community Trust	\$ 6,000.00
Maketu Volunteer Fire Brigade	\$ 2,600.00
ME/CFS Support (BOP) Inc	\$ 4,000.00
Medical scholarship	\$ 3,300.00
Mount Maunganui Lifeguard Services	\$ 6,000.00
NZ Heart Foundation	\$ 3,212.44
Omanu Beach Surf Lifesaving	\$ 6,000.00
Order of St John's - Otorohanga	\$ 3,135.44
Order of St Johns Tauranga	\$ 3,212.44
Otumoetai Sports and Recreation Club	\$ 7,000.00
Outward Bound	\$ 2,800.00
Pacific Island Community Trust	\$ 5,000.00
Parenting for Men	\$ 5,000.00
Parents Inc.	\$ 4,000.00
Parkinsonism Society Tauranga	\$ 4,000.00
Royal NZ Foundation for Blind	\$ 3,212.44
Salvation Army	\$ 8,619.12
SPCA - Te Kuiti	\$ 3,135.44
St Columba Presbyterian Church	\$ 3,212.44
St John Ambulance - Mount Maunganui	\$ 5,000.00
St Peters Care & Counselling Services	\$ 5,000.00
Stroke Foundation - Midland Region	\$ 3,000.00
Supporting Families	\$ 6,000.00
Tauranga (BOP) Hearing Association	\$ 5,000.00
Tauranga Art Gallery	\$ 1,094.98
Tauranga Arts Festival	\$ 5,000.00
Tauranga Community Foodbank	\$ 10,000.00
Tauranga Community Housing Trust	\$ 5,000.00
Tauranga District Riding for the Disabled	\$ 5,000.00
Tauranga Moana Restorative Justice Trust	\$ 3,000.00
Tauranga Regional Multicultural Society	\$ 5,000.00
Tauranga Volunteer Coastguard	\$ 5,000.00
Te Aranui Youth Trust	\$ 6,910.00
Te Awanui Hauora Trust	\$ 6,000.00

Te Huinga Social Services	\$ 6,000.00
Te Puke Community Care Trust	\$ 5,000.00
Te Runanga O Ngati Whakaue ki Maketu	\$ 6,000.00
Volunteer WBOP	\$ 1,437.50
Waikato University Adult scholarship	\$ 3,000.00
Waipuna Hospice	\$ 19,734.44
Welcome Bay Community Charitable Trust	\$ 1,000.00
Whakaatu Whanaunga Trust	\$ 6,000.00
YMCA Tauranga	\$ 5,089.29
Young Workers' Resource Centre	\$ 2,000.00
Zahnee's Cause	\$ 1,425.92
TOTAL	\$294,051.66